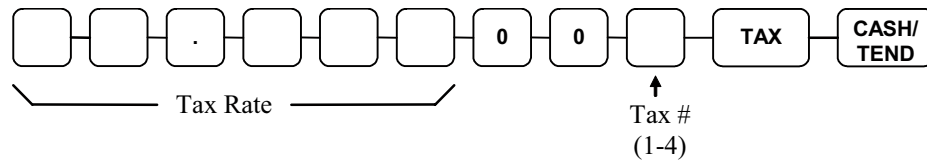


## Programming a Tax Rate Percentage

1. Turn the control lock to the **PGM** position.
2. Enter the rate, with a decimal: 0.000-99.999. It is not necessary to enter proceeding zeros. For example, for 6%, enter 06.000 or 6.000.)
3. Enter **00**.
4. Enter the number of the tax rate you are programming (1-4).
5. Press the **TAX** key.
6. Press the **CASH/TEND** key to end programming.

### Tax Rate Programming Flowchart



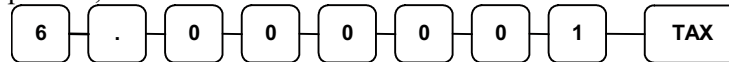

---

**Please Note: After programming the tax rate, you must program the PLUs taxable to calculate tax. Go to the next page for PLU programming steps.**

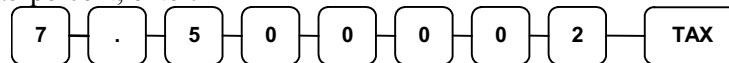
---

### Tax Rate Programming Examples

If tax 1 is 6 percent, enter:



If tax 2 is 7.5 percent, enter:



Press the **CASH/TEND** key to end programming.



The rates you have entered will display and print on the printer:

```

DATE 03/09/2007 FRI   TIME 01:32

***** TAX PROGRAMMING *****
-----
TAX1
ADD-ON AT                6.000%

TAX2
ADD-ON AT                7.500%

CLERK 1                000046  00000
    
```